



WALLI

300X  
600MM

S  
E  
T  
T  
I  
N  
G

PRESENT THE ICONIC DESIGN  
OF INDIAN WALL **TRADITION**

A decorative tile pattern featuring a central square tile with a blue and gold floral design, surrounded by a grid of smaller square tiles in various shades of gray and white. The pattern is framed by a white arch.

## ENDLESS ETHIC

Company makes emphasis on quality measures the most. The total quality management principles the constant practice of improving in technology and manpower knowledge helps company to improve quality on regular basis.

Within a short period of time we have set up our network across India, and not only that we have make our presence in abroad also, and today we are exporting our many international buyers.

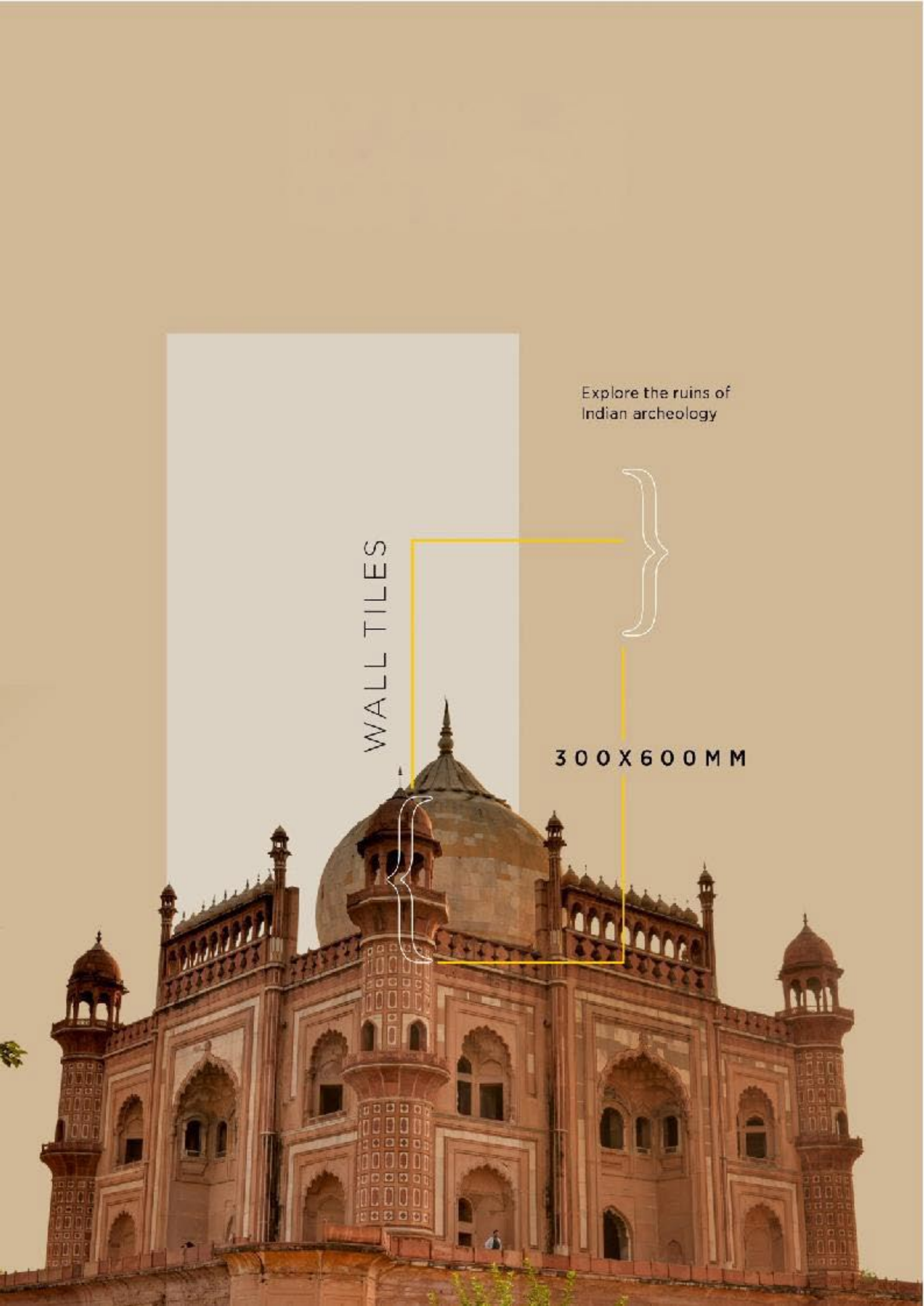
So if you need quality product with innovation in design and technology, Company Tiles will the right option for you.

We are just call / mail away.....

Explore the ruins of  
Indian archeology

WALL TILES

300 X 600 MM





Resistance to  
UV Rays



Resistance  
to Stain



Resistance  
to Frost

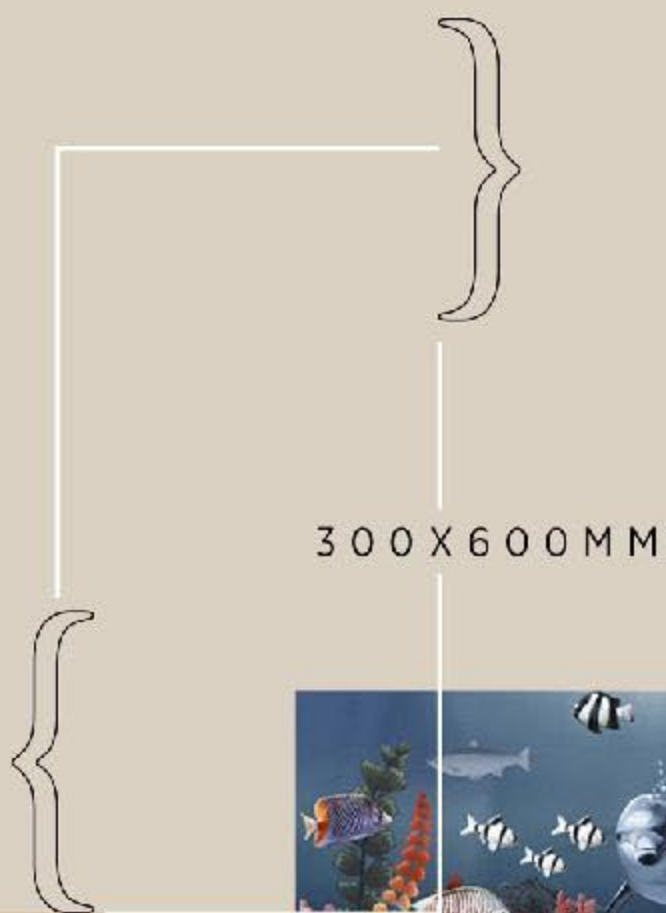


Resistance to  
Chemicals



100% Water  
Proof





300 X 600 MM



The beauty of ancient style

# GLOSSY

S E R I E S

# Wall Tiles 300X600 MM

**Advoc**  
ceramic



1-9001\_LT  
2-9001\_HL\_1  
3-9001\_HL\_1  
4-9001\_DK

1-9002\_LT  
2-9002\_HL\_1  
3-9002\_HL\_2  
4-9002\_DK



## Glossy Finish...!!

Wall Tiles  
300X600 MM

**Advoc**  
ceramic



1-9003\_LT  
2-9003\_HL\_1  
3-9003\_HL\_2  
4-9003\_DK

1-9004\_LT  
2-9004\_HL\_1  
3-9004\_HL\_2  
4-9004\_DK



WATERPROOF SURFACE



CHEMICAL RESISTANCE



FROST RESISTANCE

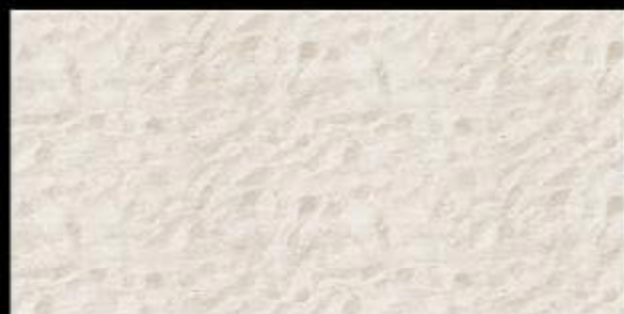


RESISTANCE TO FIRE

**Glossy Finish...!!**

# Wall Tiles 300X600 MM

**Advoc**  
ceramic



1-9005\_LT  
2-9005\_HL\_1  
3-9005\_HL\_2  
4-9005\_DK

1-9006\_LT  
2-9006\_HL\_1  
3-9006\_HL\_2  
4-9006\_DK



WATERPROOF SURFACE



CHEMICAL RESISTANCE



FROST RESISTANCE



RESISTANCE TO FIRE

## Glossy Finish...!!



## ADVOC CERAMIC

8-A National Highway, Sartanpar Road,  
At. Ratavirda, Tal : Wankaner, Morbi-363642 (Guj.) India.



+91 90992 96699



info@advocceramic.com