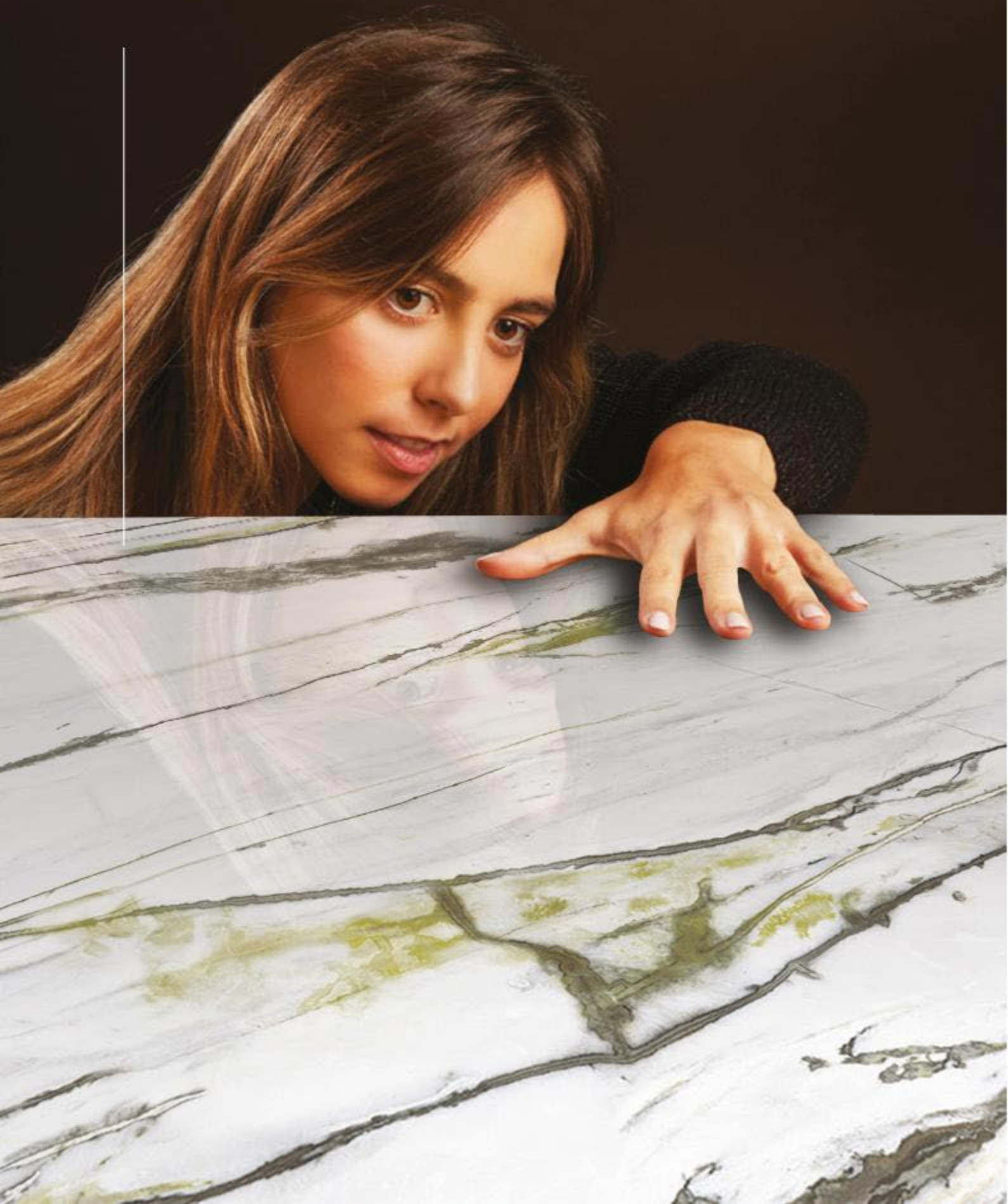


**THE  
IRRESISTIBLE  
STYLE OF  
MARVELOUS  
SLABS**

**MARBLE TOUCH**  
next level slab

**800x1600MM**

**DARK HIGHGLOSS**



# Why Marbletouch ?

## THE DURABILITY OF MARBLETOUCH SLABS

makes them perfect for high-traffic areas as they're resistant to scratches and scuffs. Whether in an area of the home that sees high footfall, such as the hallway or kitchen or in a commercial space, porcelain is the most hardwearing.

The refined, exquisite spirit of Marbletouch slabs finds an intriguing new timeless collection of fine floors and coverings. The Marbletouch collection presents a unique and evolution of luxury for modern settings with unique allure. New structures and fine materials join forces to give the space a glamorous, contemporary look.

**MARBLETOUCH**  
next level slab



800x1600MM | 32"X64"

# ALLISON BIANCO

RANDOM

FINISH | ENDLESS



800x1600MM | 32"X64"

# ALPS GREEN

RANDOM

FINISH | ENDLESS



**MARBLE TOUCH**  
next level slab



800x1600MM | 32"X64"

# ANTICO CREMA

RANDOM

FINISH | ENDLESS



800x1600MM | 32"X64"

# ANTICO WHITE

RANDOM

FINISH | ENDLESS





800x1600MM | 32"X64"

# BERMUDA BEIGE

RANDOM

FINISH | ENDLESS



NEW



800x1600MM | 32"X64"

# CALACATA RED

RANDOM

FINISH | ENDLESS



800x1600MM | 32"x64"

# CALACUTTA ORO

RANDOM

FINISH | ENDLESS





800x1600MM | 32"X64"

# CANOVA BEIGE

RANDOM

FINISH | **ENDLESS**



800x1600MM | 32"X64"

# DOLCE BROWN

RANDOM

FINISH | ENDLESS

 **Advoc**  
c e r a m i c

**NEW**



800x1600MM | 32"X64"

# DYNA NATURAL

RANDOM

FINISH | ENDLESS



800x1600MM | 32"X64"

# DYNA SMOKE

RANDOM

FINISH | ENDLESS





800x1600MM | 32"X64"

# EPOQUE BEIGE

RANDOM

FINISH | ENDLESS

 **Advoc**  
c e r a m i c



**MARBLE TOUCH**  
next level slab



800x1600MM | 32"X64"

# EPOQUE BIANCO

RANDOM

FINISH | ENDLESS



800x1600MM | 32"X64"

# NOVELLA CREMA

RANDOM

FINISH | ENDLESS



**MARBLE TOUCH**  
next level slab



800x1600MM | 32"X64"

# OXPORT BLUE

RANDOM

FINISH | ENDLESS



800x1600MM | 32"X64"

# PATAGONIA MINK

RANDOM

FINISH | ENDLESS



800x1600MM | 32"X64"

# PERLATO BEIGE

RANDOM

FINISH | ENDLESS





800x1600MM | 32"X64"

# PIETRA SANTA

RANDOM

FINISH | ENDLESS



**MARBLE TOUCH**  
next level slab



800x1600MM | 32"X64"

# PULPIS GREY

RANDOM

FINISH | ENDLESS

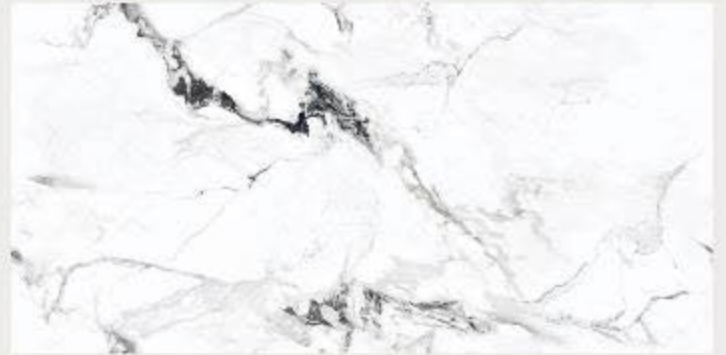


800x1600MM | 32"X64"

# SATUARIO

RANDOM

FINISH | ENDLESS



**MARBLE TOUCH**  
next level slab



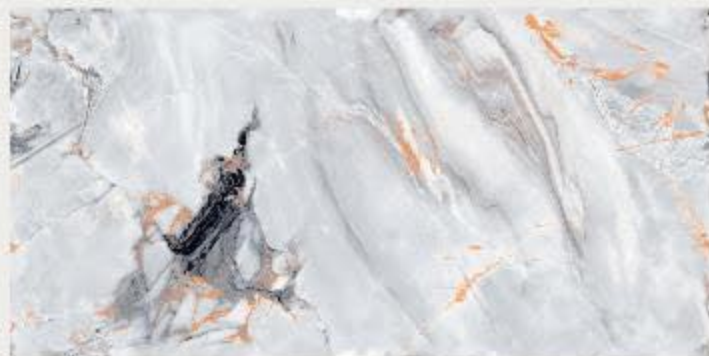
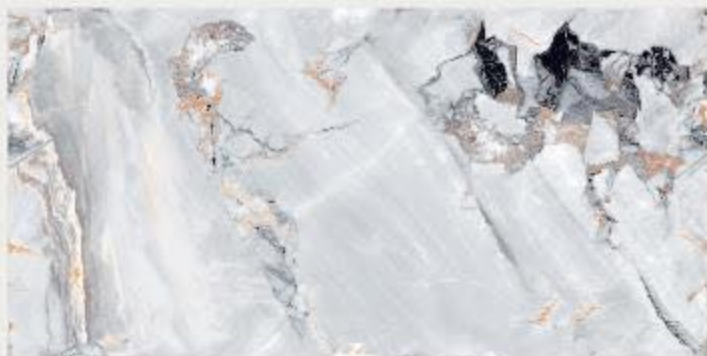
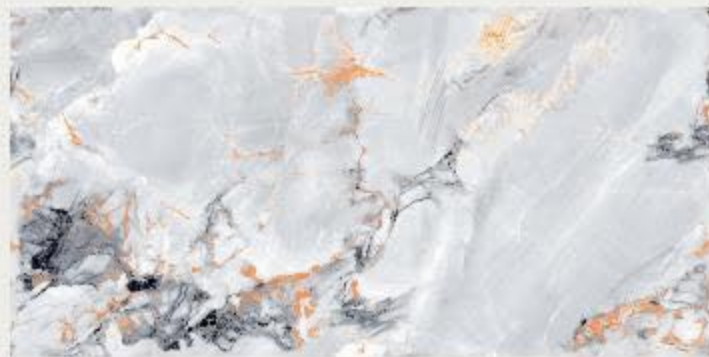
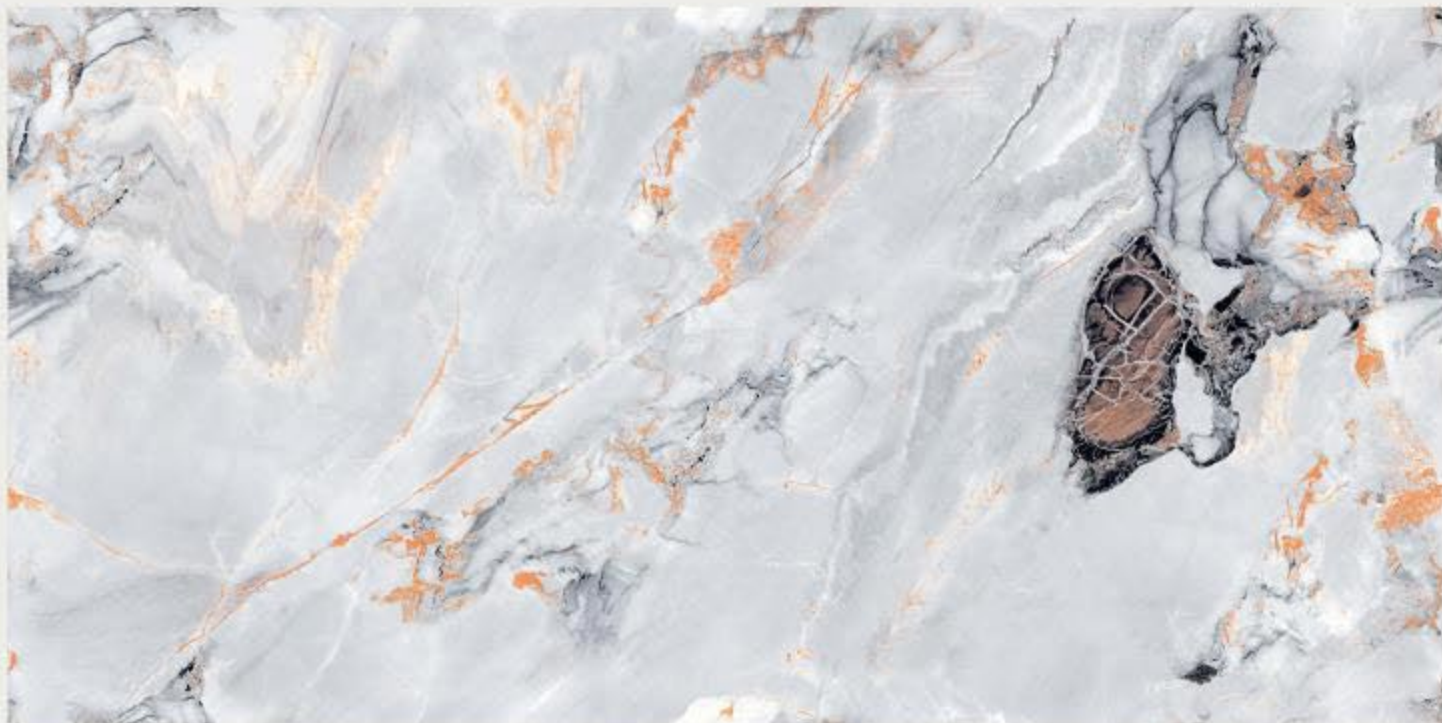
800x1600MM | 32"X64"

# SOFITA COLLIN

RANDOM

FINISH | ENDLESS

 **Advoc**  
c e r a m i c



800x1600MM | 32"X64"

# SOFITA ORCHID

RANDOM

FINISH | ENDLESS



800x1600MM | 32"X64"

# SOFITA PEARL

RANDOM

FINISH | ENDLESS

 **Advoc**  
c e r a m i c





800x1600MM | 32"X64"

# SOFITA SILVER

RANDOM

FINISH | ENDLESS



800x1600MM | 32"X64"

# SOFITA WHITE

RANDOM

FINISH | **ENDLESS**



800x1600MM | 32"X64"

# STATUARIO LINER

RANDOM

FINISH | ENDLESS



**MARBLE TOUCH**  
next level slab



800x1600MM | 32"X64"

# STONE MUSE

RANDOM

FINISH | ENDLESS



NEW



800x1600MM | 32"X64"

# STONE NATURAL

RANDOM

FINISH | ENDLESS

 **Advoc**  
c e r a m i c

NEW



800x1600MM | 32"X64"

# STONE SILVER

RANDOM

FINISH | **ENDLESS**



**NEW**



## TECHNICAL SPECIFICATION

CHARACTERISTIC	STANDARD AS PER ISO-13006/EN14411 GROUP Bla	VALUE	TEST METHOD
<b>REGULATORY PROPERTIES</b>			
Deviation in length & width	±0.5 %	±0.1 %	ISO-10545-2
Deviation in thickness	±5.0 %	±4.0 %	ISO-10545-2
Straightness in side	±0.5 %	±0.1 %	ISO-10545-2
Rectangularity	+0.5 %	+0.1 %	ISO-10545-2
Surface flatness	±0.5 %	±0.2 %	ISO-10545-2
Color difference	Unaltered	No change	ISO-10545-16
Glossiness	As per mfg	Min 90%	GLOSSOMETER
<b>STRUCTURAL PROPERTIES</b>			
Water absorption	< 0.50 %	< 0.05 %	ISO-10545-3
Apparent density	> 2.0 g/cc	> 2.10 g/cc	DIN 51082
<b>MASSIVE MECHANICAL PROPERTIES</b>			
Modulus of rupture	Min. 35 N/mm <sup>2</sup>	Min. 40 N/mm <sup>2</sup>	ISO-10545-4
Breaking strength	Min. 1300 N	Min. 2000 N	ISO-10545-4
Impact resistance	As per mfg.	Min. 0.55	ISO-10545-5
<b>SURFACE MECHANICAL PROPERTIES</b>			
Surface abrasion resistance	As per mfg	Min. Class-3	ISO-10545-7
MOH's hardness	As per mfg	Min. 4	EN 101
<b>THERMO HYGROMETRIC PROPERTIES</b>			
Frost resistance	No damage	No damage	ISO-10545-12
Thermal shock resistance	No damage	No damage	ISO-10545-9
Moisture expansion	Nil	Nil	ISO-10545-10
Thermal expansion (COE)	Max. 9.0 x 10 <sup>-6</sup>	Max. 6.5 x 10 <sup>-6</sup>	ISO-10545-8
Crazing resistance	As per mfg	Min. 10 Cycle	ISO-10545-11
<b>CHEMICAL PROPERTIES</b>			
Chemical resistance	No damage	No damage	ISO-10545-13
Stain resistance	Resistant	Resistant	ISO-10545-14
<b>SAFETY PROPERTIES</b>			
Slip resistance	As per mfg	> 0.40	ISO-10545-17
Fire resistance	As per mfg	Fireproof	N. A.
Lead & Cadmium given off by glazed tiles	As per mfg	Does not yield	ISO-10545-15
		Pb & Cd	

## PACKING DETAILS

Size	Tiles / Box	Coverage Area / Box <small>(approx.)</small>	Coverage Area / Box <small>(approx.)</small>
800X1600MM	2 pcs	2.56 Sq. m.	27.55 Sq. ft.



## ADVOC CERAMIC

8-A National Highway, Sartanpar Road,  
At. Ratavirda, Tal : Wankaner, Morbi-363642 (Guj.) India.

 +91 90992 96699  [info@advocceramic.com](mailto:info@advocceramic.com)